

AMAZING
SCIENCE
FEATURE

NO. 1
JUNE
2026

10¢

★ THE NEXT REVOLUTION IN THINKING MACHINES! ★

APPROVED
BY THE
INQUISITIVE
MIND
IMA
AUTHORITY

MAGNETIC FLUIDIC COMPUTING

A
NEW ERA
OF
INTELLIGENCE!

CIRCULATION, ADMISSIBILITY, AND
THE ARCHITECTURE OF TRAJECTORY!

WHAT IF
A COMPUTER
HAD **NO**
FIXED
MEMORY?

THE CIRCULATION LOOP
DOCK • COMPUTE • HEAT
EJECT • COOL • RETURN

WHAT IF
THOUGHT
LIVED IN
THE **PATH**
IT TOOK?

MAGNETIC
ROUTING
FIELDS

ABSORPTION
COOLING SYSTEM

COMPUTATION
THAT **MOVES!**
INTELLIGENCE
THAT **FLOWS!**

THIS...
THIS ISN'T
A COMPUTER!
IT'S **ALIVE!**

FLYXION'S 
AMAZING
SCIENCE FEATURE!



THE METAPHYSICS OF LOCATION

A NEW WAY
TO THINK
ABOUT
COMPUTATION!



CONVENTIONAL MACHINES
BELIEVE EVERYTHING
IMPORTANT HAS AN **ADDRESS**.

BUT WHAT IF
THE ADDRESS WAS
NEVER THE POINT?

VS.

CPU

RAM

DISK

NO FIXED PARTS.
ONLY FLOW.

PODS COME.
PODS GO.
THE SYSTEM
CONTINUES.

EVERYTHING
IN ITS PLACE.

FIND IT.
FETCH IT.
BRING IT BACK.
ONE STEP AT A TIME!

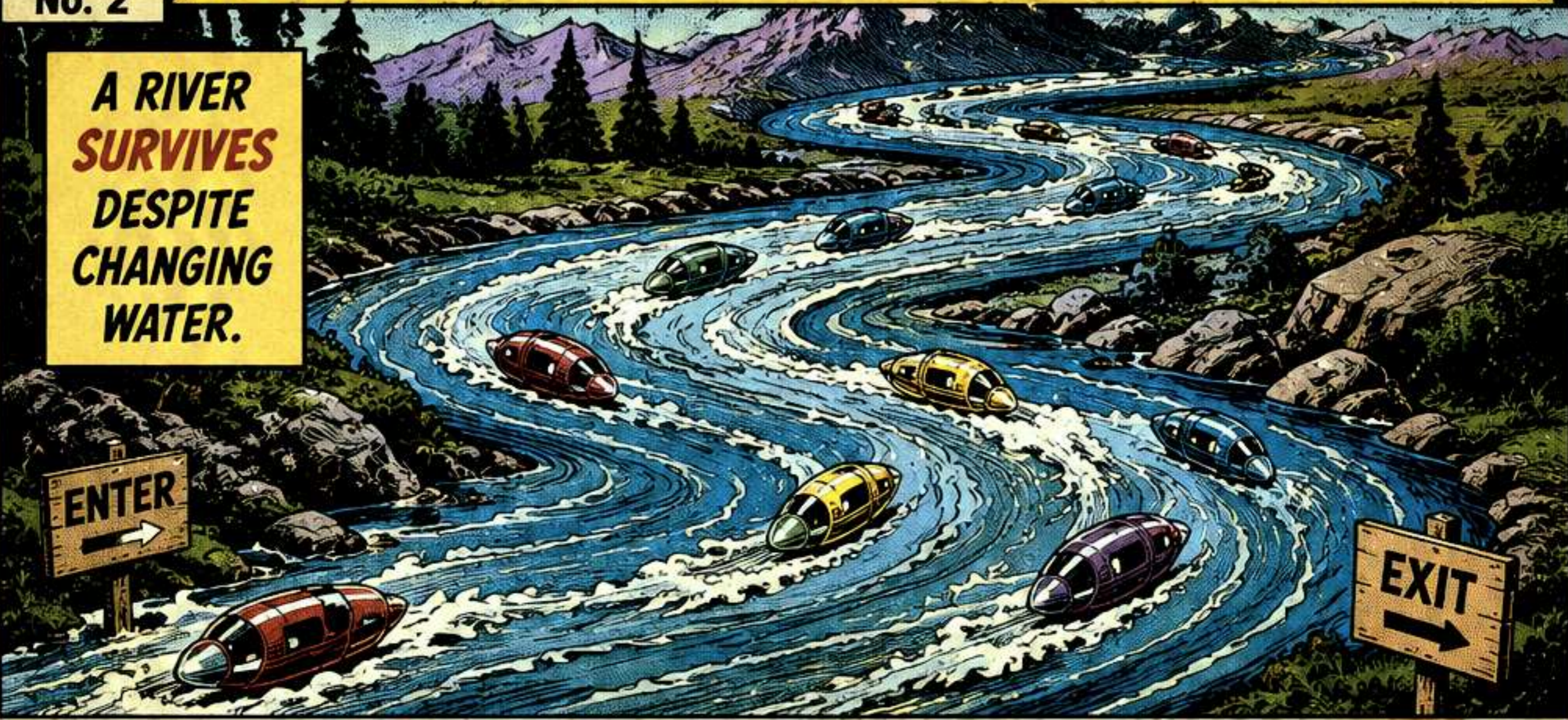
THE ARCHITECTURE OF STORAGE
BEGINS WITH **PLACES**.

BUT...

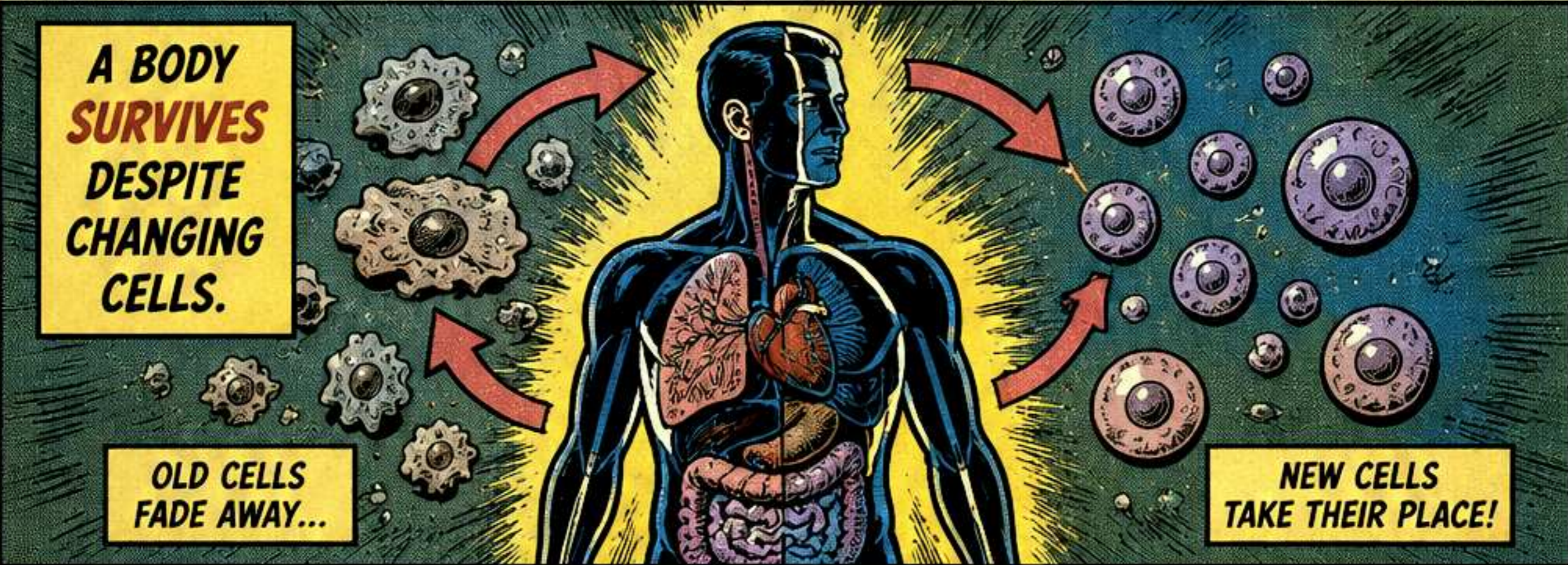
THE ARCHITECTURE OF CIRCULATION
BEGINS WITH **PATHS**.

THE PATTERN OF RETURN

A RIVER
SURVIVES
DESPITE
CHANGING
WATER.



A BODY
SURVIVES
DESPITE
CHANGING
CELLS.



OLD CELLS
FADE AWAY...

NEW CELLS
TAKE THEIR PLACE!

A CIRCULATING
MACHINE
SURVIVES
DESPITE
CHANGING
HARDWARE.



OLD PODS
RETIRE...

NEW PODS
JOIN THE FLOW...

THE PATTERN
CONTINUES.

WHAT ENDURES IS THE **PATTERN OF RETURN.**

MEMORY IS NOT STORAGE

TRADITIONAL MEMORY
MEANS **SEARCHING** FOR
A **THING**.

FACTS

EVENTS

DATA

WHEREE
IS **IT**?!

RETRIEVE:
FILE #7421-B
SUBJECT: **MEANING?**

A-F

IT TAKES **TIME**. IT TAKES **DISTANCE**.
IT TAKES **SEARCH**.

CIRCULATING MEMORY MEANS
REPEATING A **TRAJECTORY**.

CYCLE 1

CYCLE 5

CYCLE 12

CYCLE 27

MEMORY
=
RECURRENCE
not
MEMORY
=
LOCATION

THE MACHINE REMEMBERS BY
RE-ENTERING A **STABLE CURRENT**.

THE GEOGRAPHY OF POSSIBILITY

THE IMPORTANT QUESTION IS NO LONGER:
"WHERE AM I?"
 BUT:
"WHERE MAY I GO NEXT?"



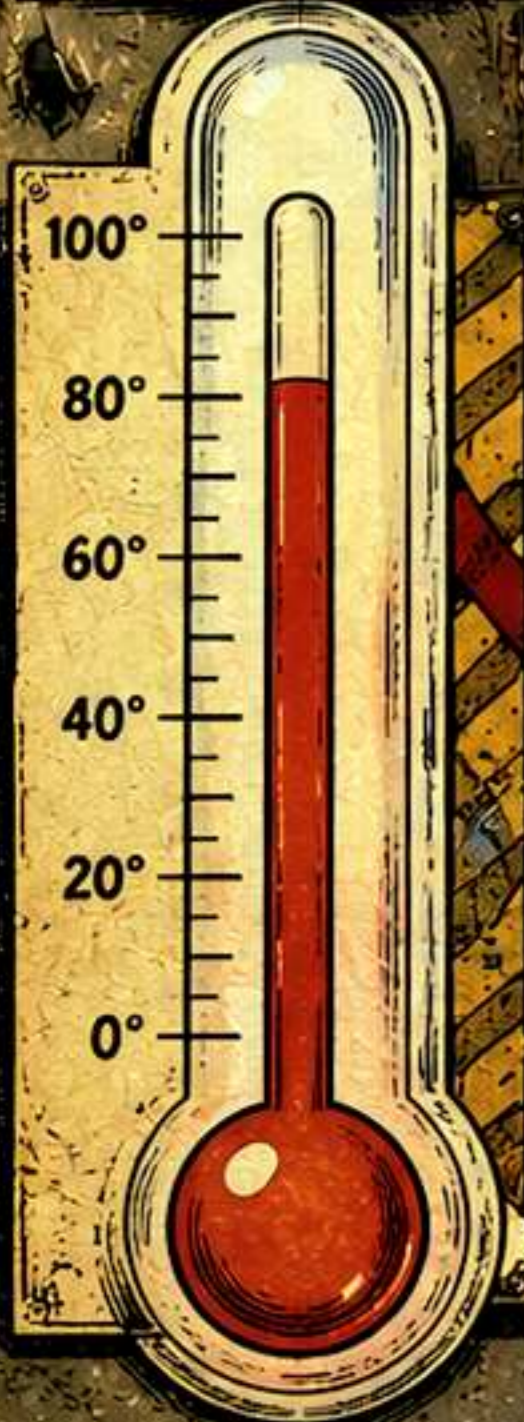
COMPUTATION AS NAVIGATION

THE MACHINE DOESN'T ASK:
 "WHERE AM I?" IT ASKS: "WHERE MAY I GO NEXT?"

ENTROPY BECOMES ACCESSIBILITY

No. 5

HEAT
MEASURES DISORDER AND THERMAL ENERGY



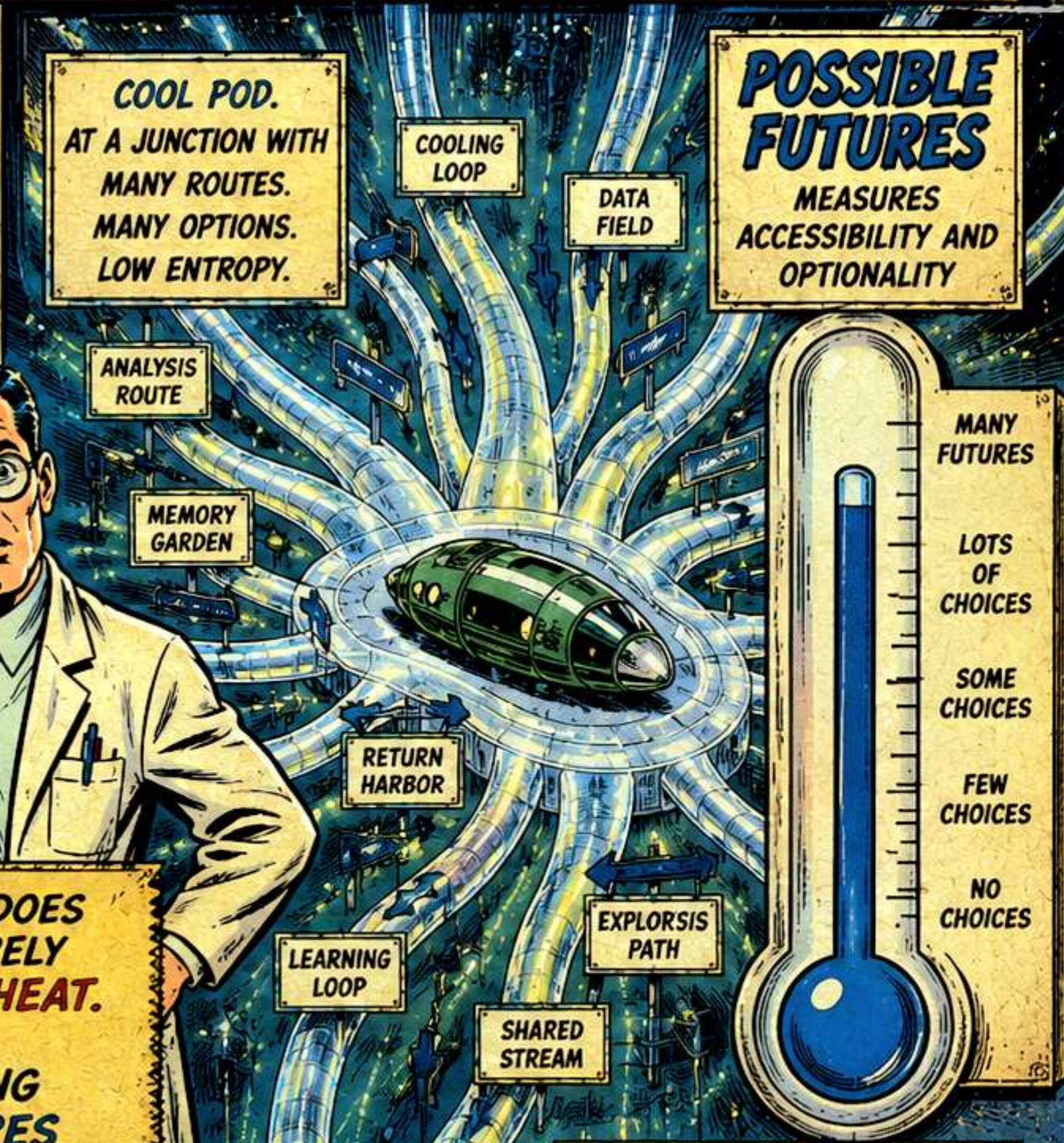
HOT POD.
TRAPPED IN A NARROW CORRIDOR.
FEW OPTIONS.
HIGH ENTROPY.



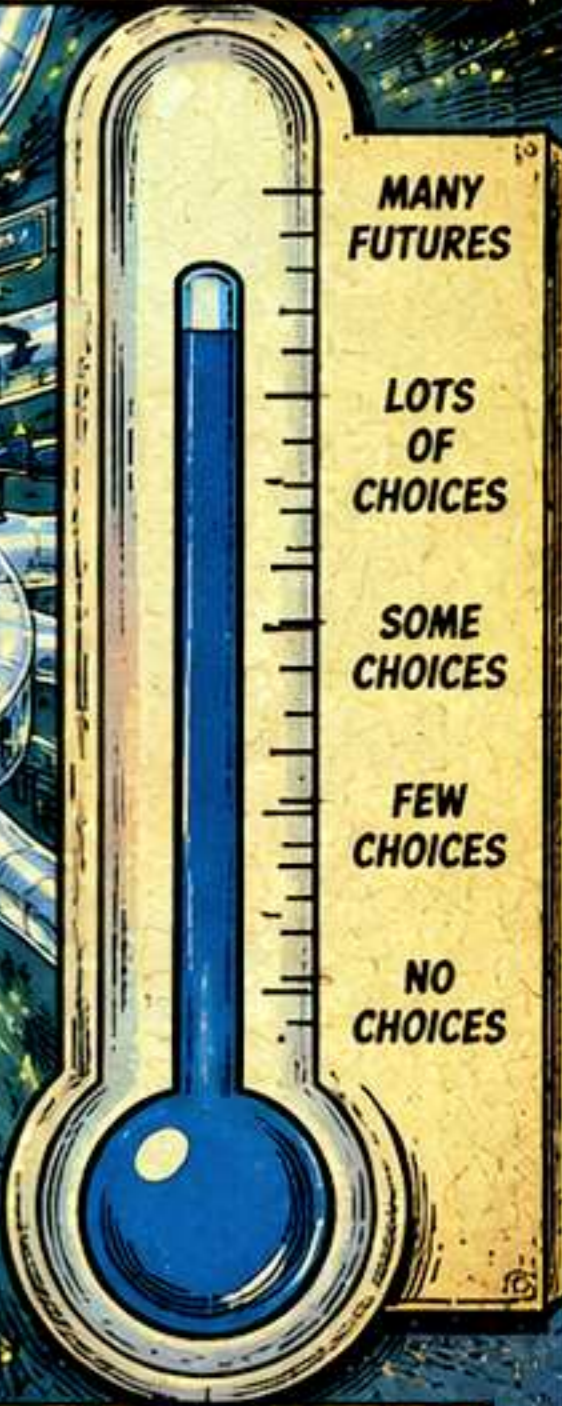
WHAT IS THE REAL MEASURE?



COOL POD.
AT A JUNCTION WITH MANY ROUTES.
MANY OPTIONS.
LOW ENTROPY.



POSSIBLE FUTURES
MEASURES ACCESSIBILITY AND OPTIONALITY



COOLING DOES NOT MERELY REMOVE HEAT.

★
COOLING RESTORES POSSIBILITIES.

- SIGNS OF HIGH ENTROPY:
- HEAT BUILDS.
 - PATHS COLLAPSE.
 - POSSIBILITIES VANISH.
 - THE SYSTEM GETS STUCK.

- SIGNS OF HIGH ACCESSIBILITY:
- ENERGY IS BALANCED.
 - PATHS OPEN.
 - POSSIBILITIES EXPAND.
 - THE SYSTEM CAN EVOLVE.

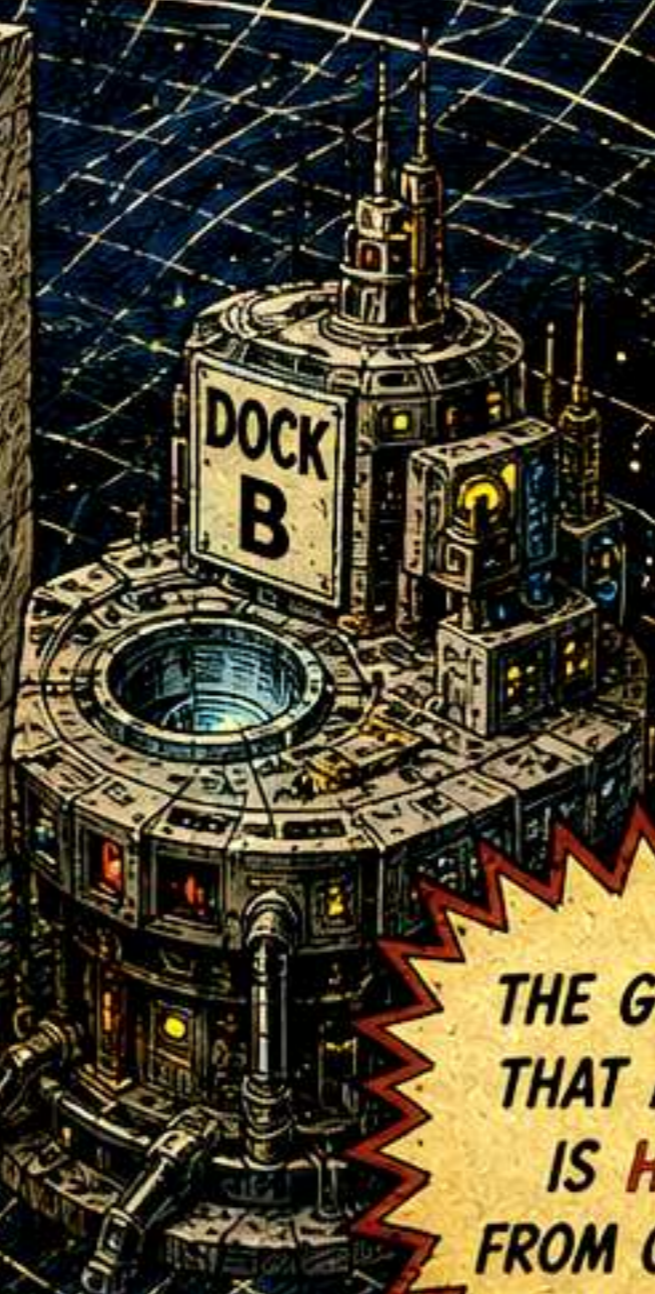
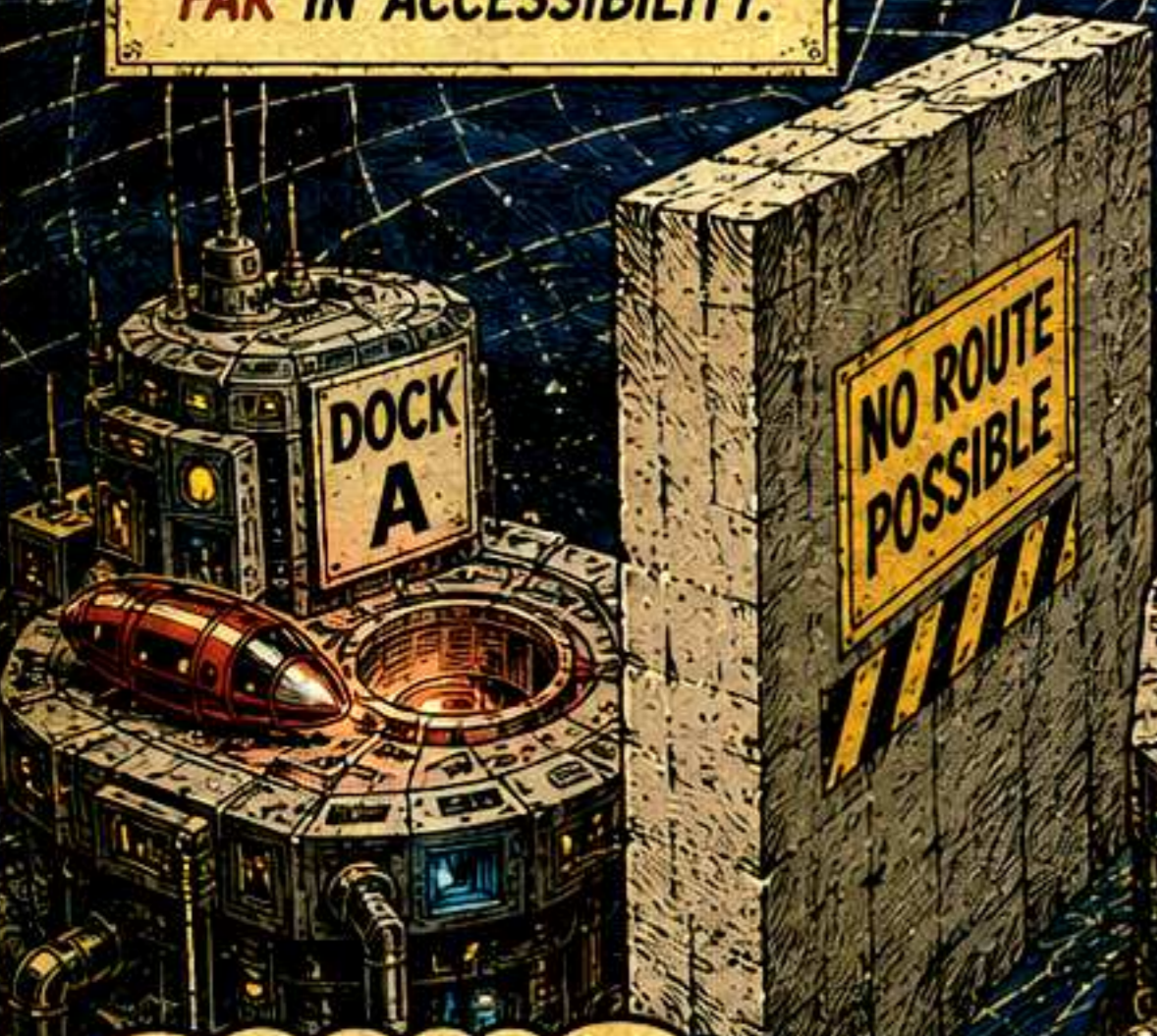
HIGH ACCESSIBILITY

MANY FUTURES!

THE HIDDEN OF GEOMETRY POSSIBILITY

CLOSE IN SPACE.
FAR IN ACCESSIBILITY.

FAR IN SPACE.
CLOSE IN ACCESSIBILITY.



PHYSICALLY ADJACENT...
YET THE WALL MAKES THE PATH
IMPOSSIBLE.

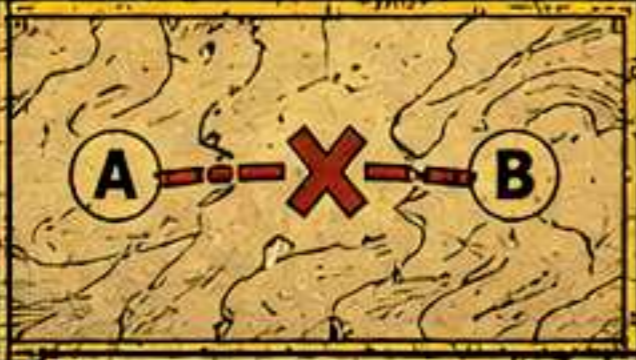
THE GEOMETRY
THAT MATTERS
IS HIDDEN
FROM OUR EYES.

PHYSICALLY DISTANT...
YET SPACE ITSELF OFFERS
A DIRECT PATH.

ACCESSIBILITY MAP KEY

- BLOCKED ROUTE
- ACCESSIBLE ROUTE
- LOW RESISTANCE PATH

- WHY THE WALL?
- THERMAL LIMITS
 - MAGNETIC BARRIERS
 - SECURITY PROTOCOLS
 - RESOURCE CONSTRAINTS



- WHY THE PATH?
- FAVORABLE GRADIENTS
 - RESONANT ROUTING
 - OPEN OPTIONS
 - LOW CONSTRAINT FLOW



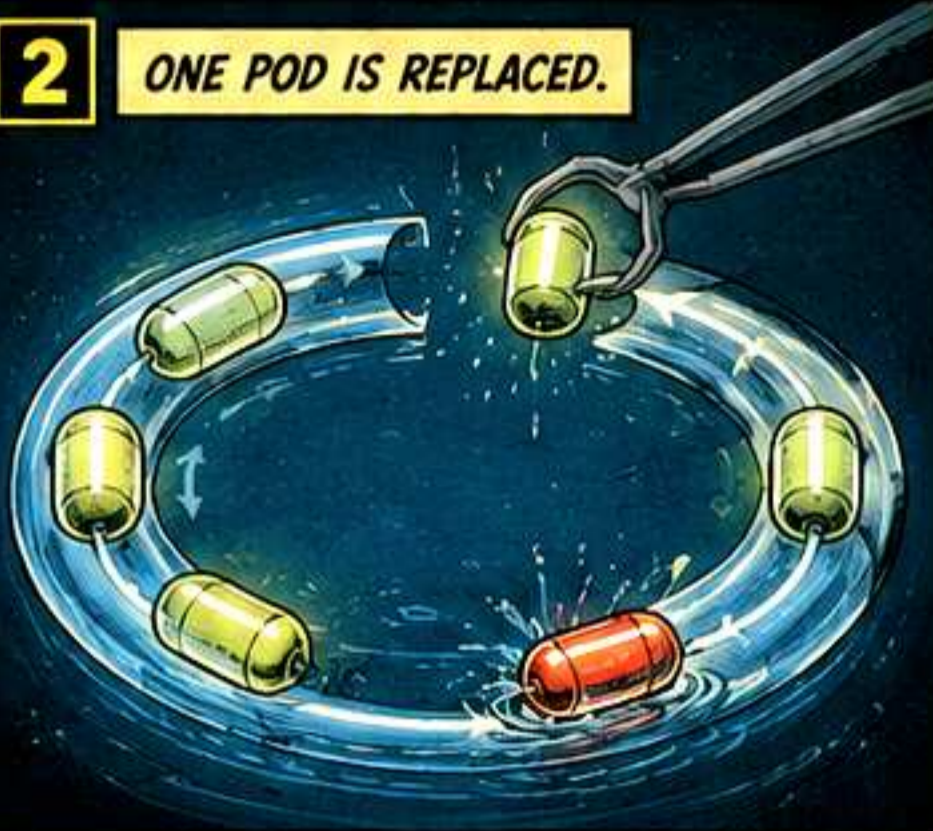
IN ACCESSIBILITY SPACE, DISTANCE IS NOT MEASURED IN MILES—
BUT IN OPTIONS.

THE SHIP OF THESEUS MACHINE

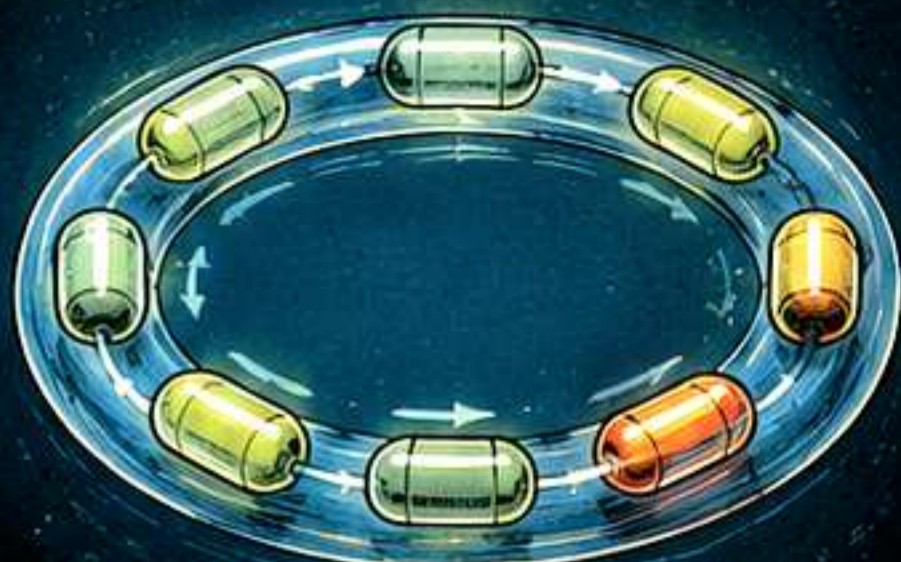
1 THE MACHINE AS BUILT.



2 ONE POD IS REPLACED.



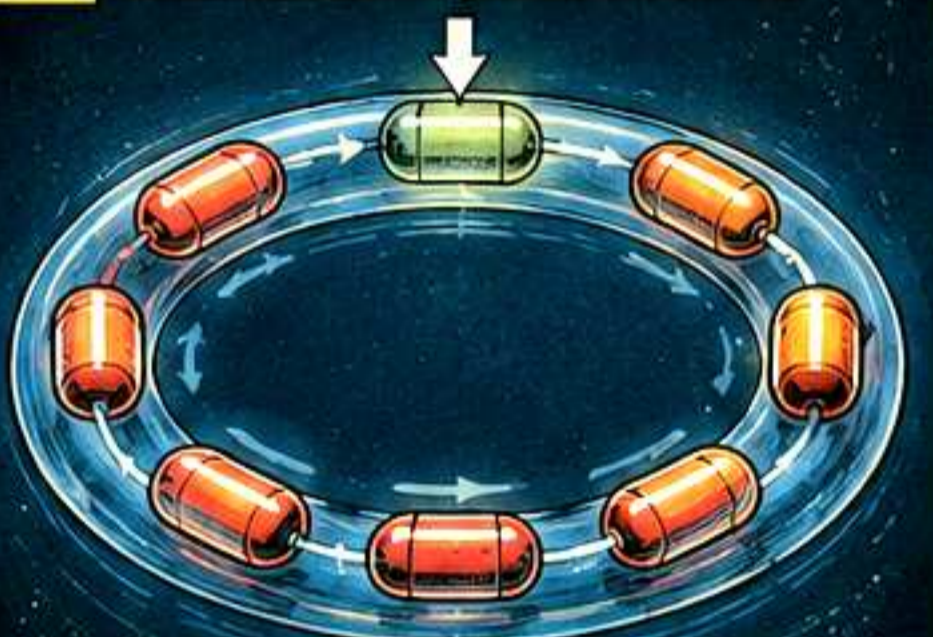
3 MORE PODS ARE REPLACED.



4 THE CURRENT NEVER STOPS.



5 ONLY ONE ORIGINAL REMAINS.



6 EVERY POD IS NEW.



NOT ONE ORIGINAL COMPONENT REMAINS.

IS IT THE SAME MACHINE?

YES!

THE RETURN PERSISTS.

IDENTITY IS NOT
PRESERVED BY MATTER.
IDENTITY IS
PRESERVED BY
RECURRENCE.

SIMULATED AGENCY

IN THE CIRCULATION,
PODS BEHAVE LIKE
TINY CITIZENS.

THIS POD
RUNS
TOWARD
DOCKING.

ON MY
WAY!

I'LL WAIT
MY TURN.

THIS POD
RETREATS
TOWARD
COOLING.

TOO HOT.
BACK OFF.

LOOK!
THEY HAVE
GOALS!

IT SURE LOOKS
LIKE PURPOSE.
LIKE INTENT.

BUT LOOK BENEATH
THE SURFACE...

CUTAWAY VIEW:
NO THOUGHTS.
NO DESIRES.
NO CHOICES.
ONLY FIELDS.
ONLY CONSTRAINTS.

GRADIENT PULL
TOWARD DOCKING

QUEUE WELL
HOLDS POSITION

POTENTIAL DROP
TOWARD COOLING

THE PODS ARE
NOT
INTELLIGENT.
THE GEOMETRY
IS.

ATTRACTOR FIELD

EXCLUSION ZONE

ENERGY GRADIENT

AGENCY WITHOUT REPRESENTATION

THE CONSTRAINT FIELD

THE MACHINE IS **NOT** THE HARDWARE.

THE MACHINE IS **NOT** THE PROCESS.

***THE MACHINE IS
THE CONSTRAINT STRUCTURE.***

BEYOND PROCESS

THERE IS A HIERARCHY OF REALITY.

3

ADMISSIBILITY

THE SPACE OF POSSIBLE TRANSFORMATIONS

THE SPACE OF
POSSIBILITIES
CONSTRAINS
WHAT CAN
HAPPEN.

NOT ALL PATHS
ARE ALLOWED.

NOT ALL
TRANSITIONS
ARE POSSIBLE.

THIS IS THE
FUNDAMENTAL
LAYER.

BEFORE ANYTHING
HAPPENS,
THIS DETERMINES
WHAT COULD
HAPPEN.

2

PROCESSES

THE ACTUAL OCCURRENCES

PROCESSES
ARE REAL.

THEY OCCUR
IN TIME.

BUT THEY ARE
NOT THE MOST
FUNDAMENTAL
THING.

PROCESSES
FLOW WITHIN
THE SPACE OF
ADMISSIBILITY.

THEY FOLLOW
THE RULES SET
ABOVE THEM.

1

OBJECTS

THE THINGS WE MANIPULATE

OBJECTS ARE
WHAT WE STORE,
MOVE, AND
OBSERVE.

THEY EXIST
IN SPACE.

BUT THEIR
POSSIBILITIES
ARE LIMITED.

OBJECTS
ARE THE
FOUNDATION
WE BUILD ON—

BUT THEY DO
NOT DEFINE
WHAT CAN
BE BUILT.

STORAGE WAS
NOT
FUNDAMENTAL.

PROCESS WAS
NOT
FUNDAMENTAL.

THE SPACE OF
POSSIBLE TRANSFORMATIONS
WAS FUNDAMENTAL.

THE REALITY OF A MACHINE IS DETERMINED BY WHAT IS ALLOWED.
POSSIBILITY PRECEDES ACTUALITY.

BUILD YOUR OWN MAGNETIC BRAIN AT HOME!

THE AMAZING
CIRCULATION COMPUTER
YOU CAN BUILD
WITH SIMPLE PARTS!

TIRED OF
ORDINARY
MEMORY?

TRY
RECURRENT
MEMORY!



NO STORAGE!
NO ADDRESS!
ONLY
RETURN!

ACCESSIBILITY
METER

MORE
POSSIBILITIES!

POWERED BY
COOLING
AND
RETURN

COOL FLOW RETURN

STABLE CURRENT
INDICATOR

A PRACTICAL GUIDE
TO
RECURRENCE

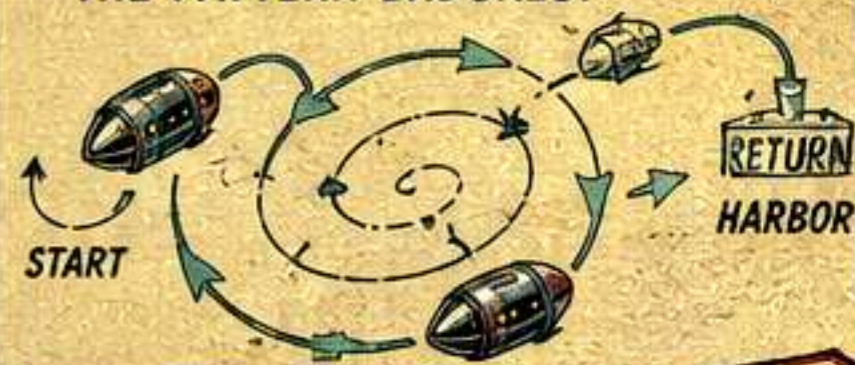
AS SEEN IN

AMAZING
Science Stories!

FEATURES:

- ✓ REMEMBERS BY RETURNING!
- ✓ NAVIGATES POSSIBILITY SPACE!
- ✓ GENERATES SIMULATED AGENCY!
- ✓ CONTAINS ABSOLUTELY
NO FIXED METAPHYSICS!

THE PATTERN ENDURES.



EASY TO BUILD!
FUN FOR ALL
INTELLIGENCES!



WARNING: MAY CAUSE SPONTANEOUS INSIGHTS
CONCERNING IDENTITY, ENTROPY, AND HIDDEN CURVATURE.
NOT APPROVED BY CONVENTIONAL STORAGE THEORISTS.

Only
\$19⁹⁵
COMPLETE
KIT!

SATISFACTION
GUARANTEED
OR YOUR MONEY
WILL RETURN*

*TO US.

MAGNETS! VACUUM TUBES! COOLING LOOPS! PATHS! CONSTRAINTS! ALL YOU NEED!
and imagination!