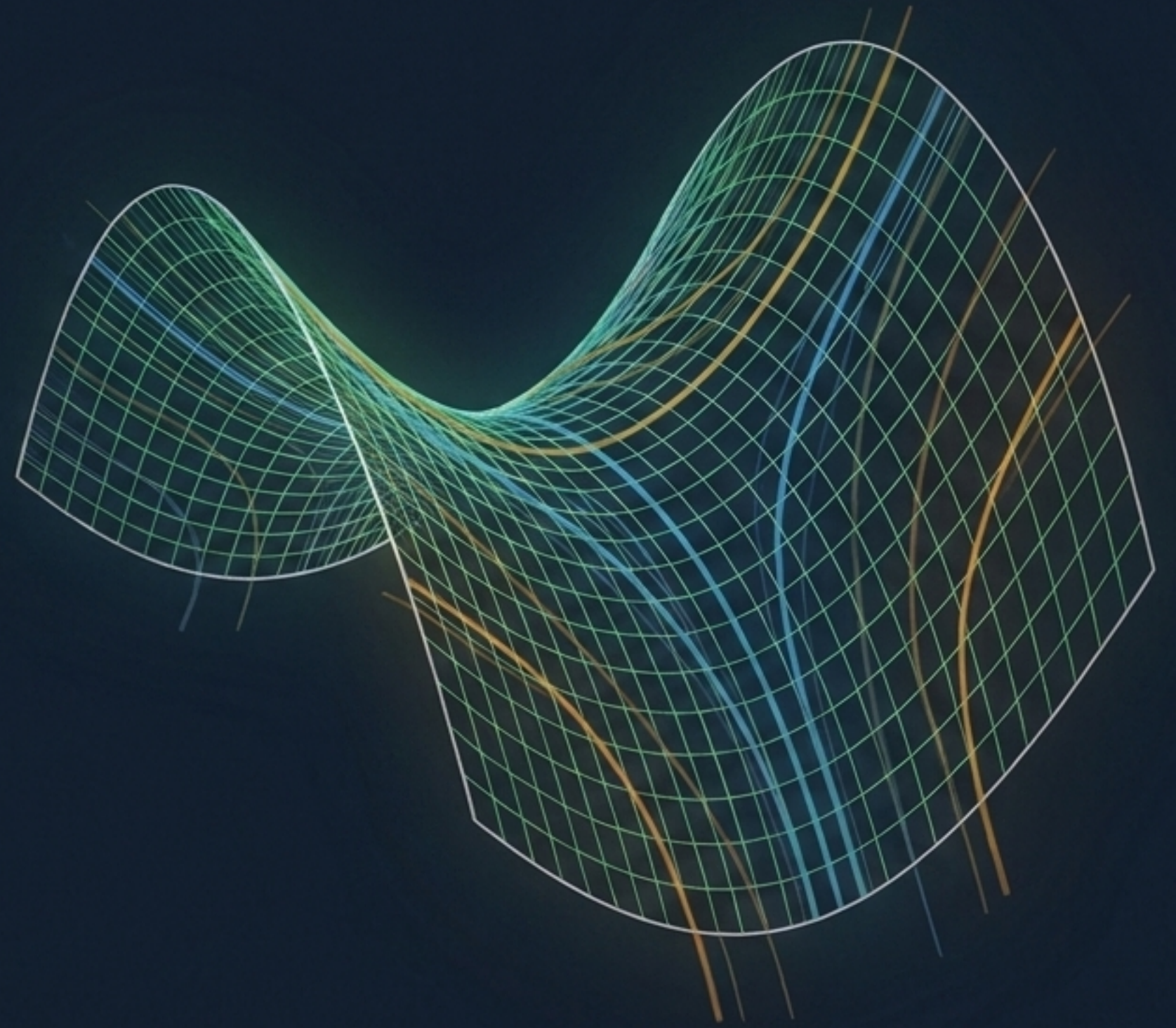


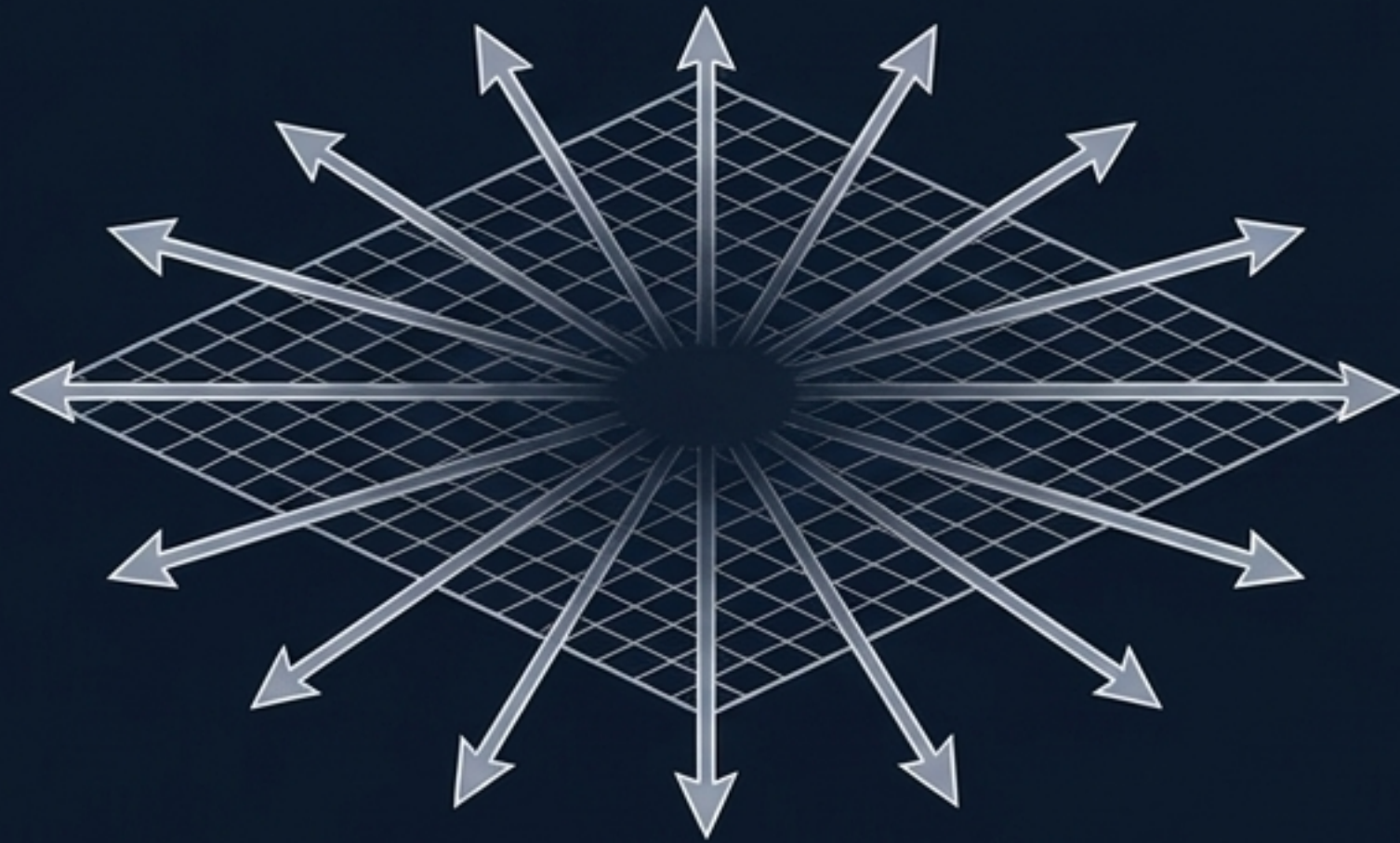
BEYOND DARK ENERGY

The RSVP Revolution:
Reinterpreting cosmic
expansion as thermodynamic
relaxation.

Flyxion | May 2026

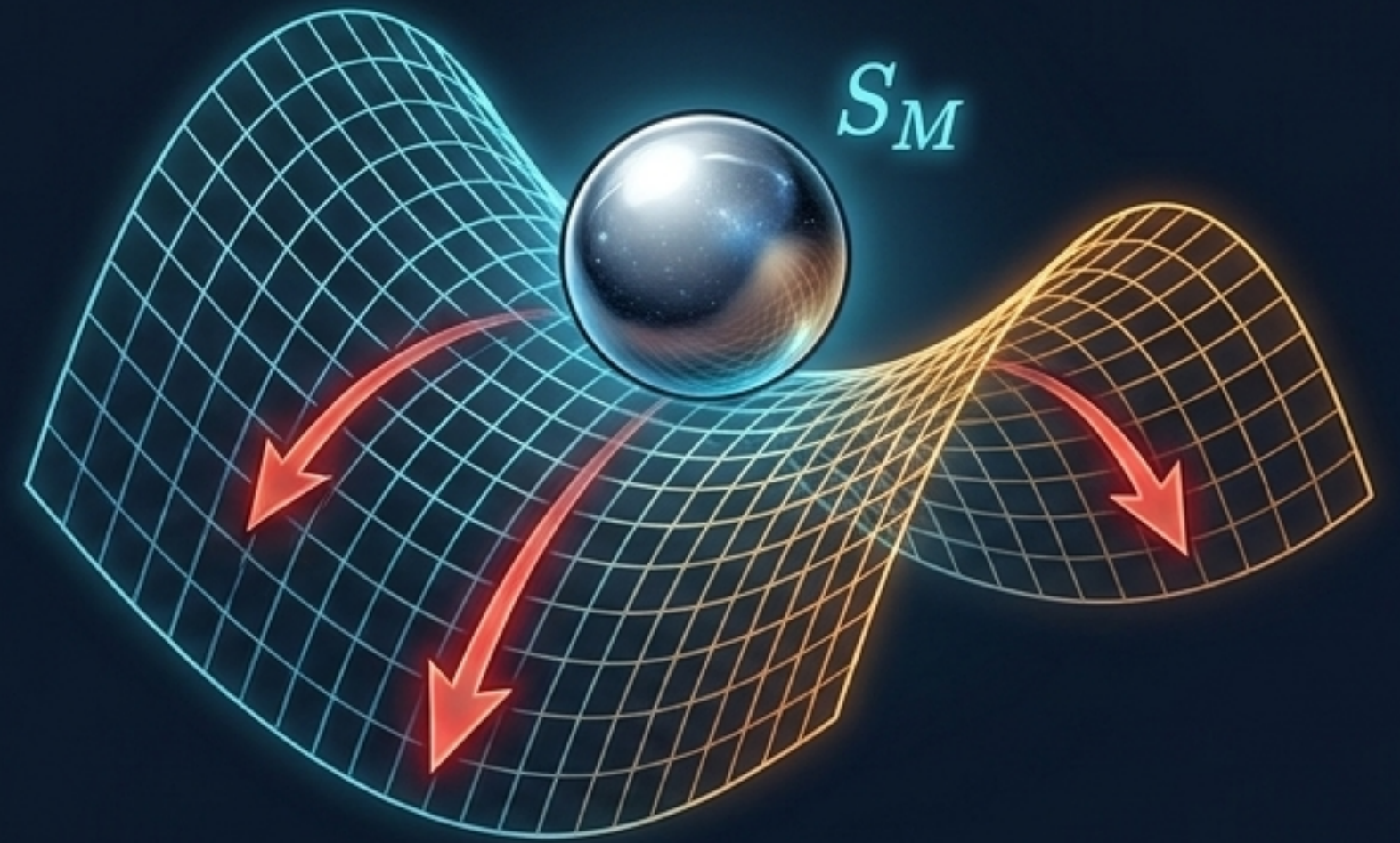


The Λ CDM Duct-Tape



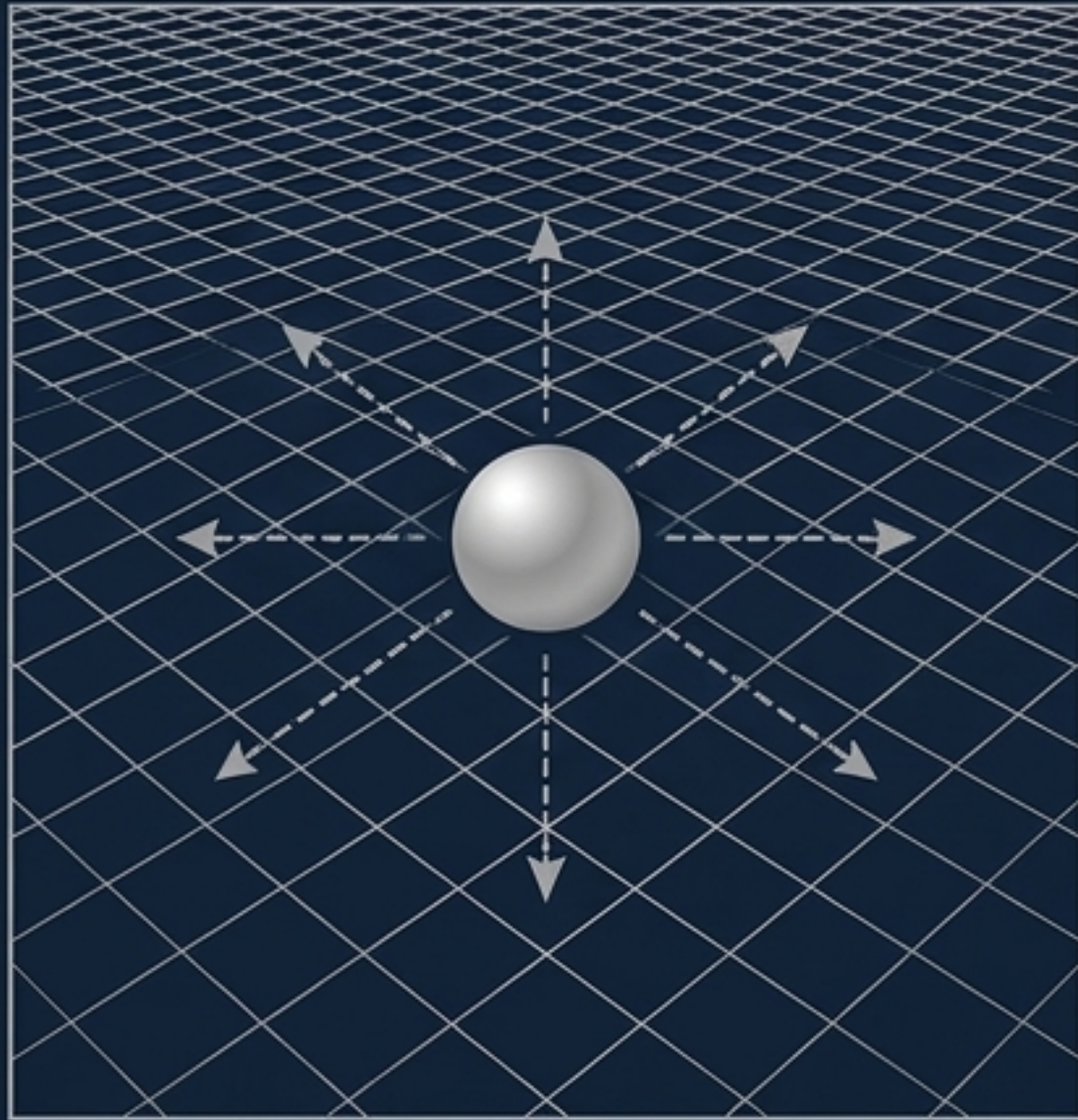
To explain cosmic acceleration, the standard model invented an invisible ghost: a cosmological constant (Λ) requiring 'Dark Energy' to make up 68% of the universe. It is a push without a physical cause.

The ATV Instability



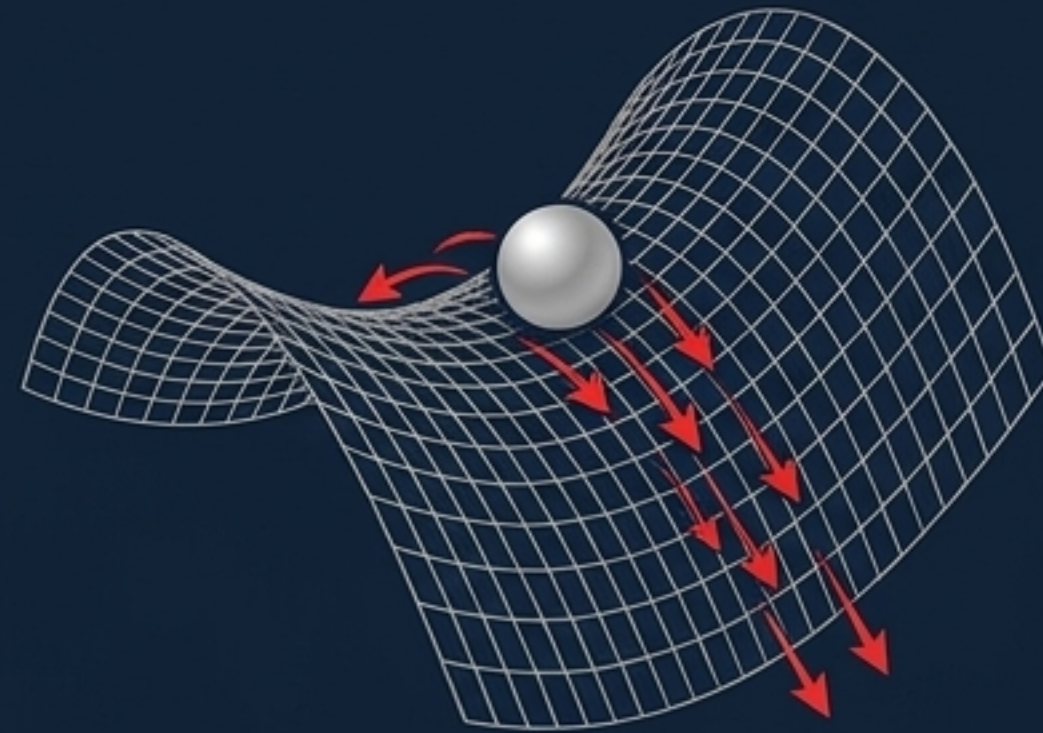
The Alexander-Temple-Vogler (ATV) proof revealed the Friedmann Big Bang is not a stable foundation—it is a geometric saddle point. Generic underdense perturbations cause an inevitable, accelerating 'fall.' No Dark Energy required.

Space is not empty. Space is a living plenum.



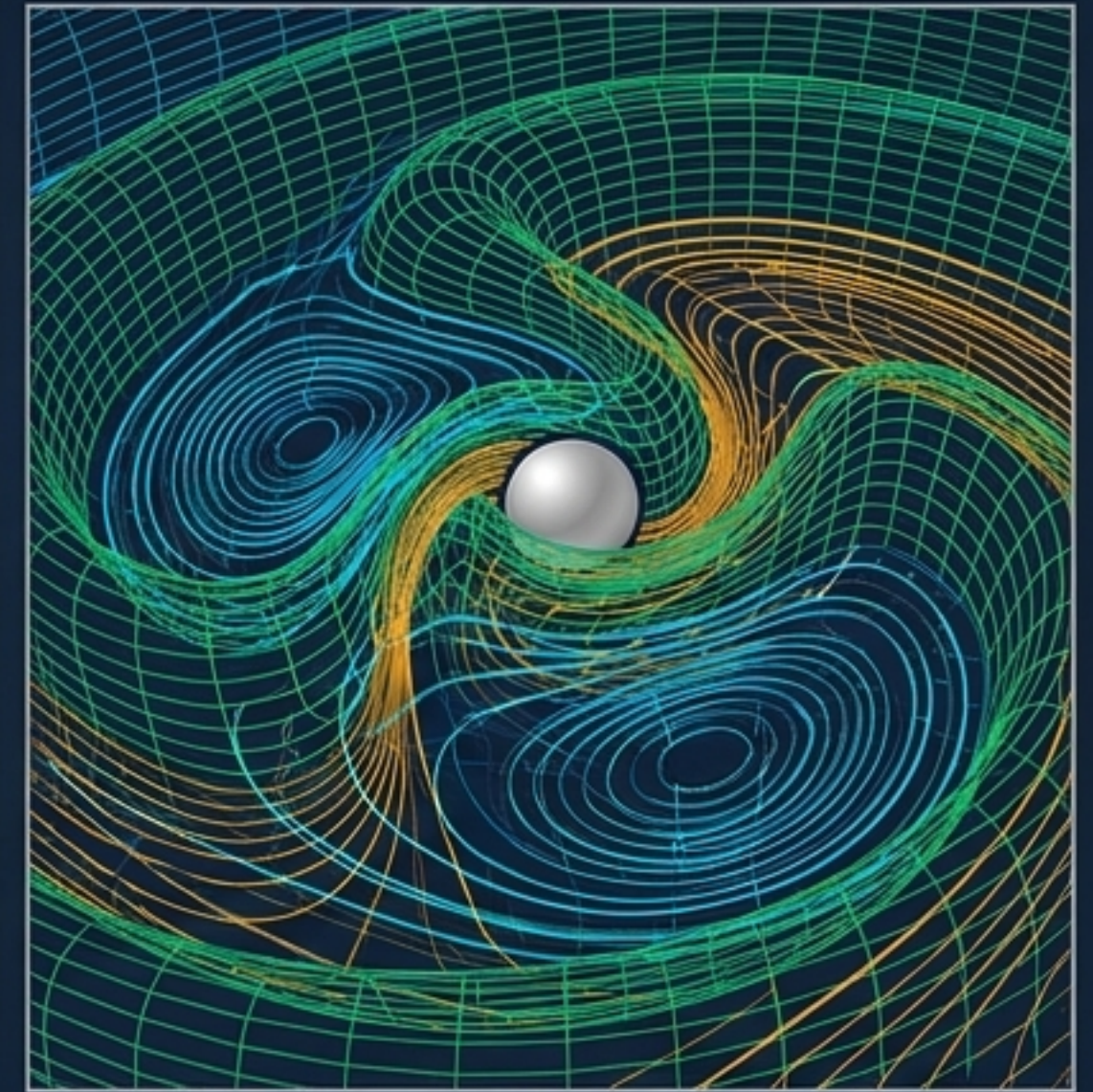
The Anomalous Vacuum (Λ CDM)

Dark Energy (The Push)



The Mathematical Anomaly (ATV)

Instability Relaxation (The Fall)



The Living Plenum (RSVP)

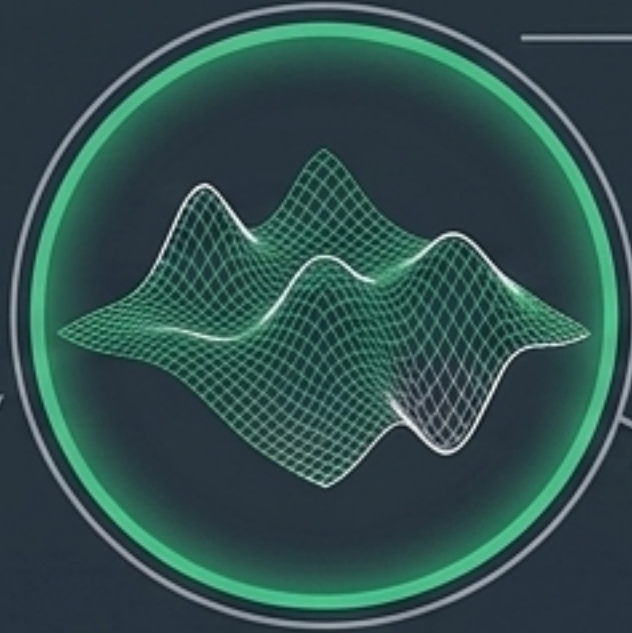
Accessibility Constraint Relaxation (The Uncoiling)

The Friedmann spacetime is merely a local geometric shadow of a richer thermodynamic reality.

The Triplet of the RSVP Medium

Scalar Accessibility Potential (Φ)

The 'friction map' of the vacuum. Determines available trajectories based on spatial resistance.



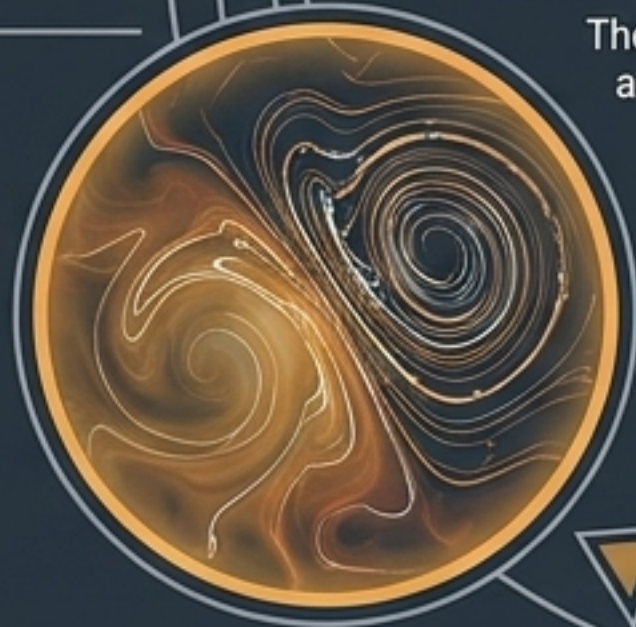
The 'friction map' of the vacuum. Determines available trajectories based on spatial resistance.

$$\nabla^{acc} \cdot V = \alpha_{\Phi} \Phi + \alpha_S S$$

The fields are inextricably locked. The flow is dictated by the entropy; the accessibility is dictated by the flow.

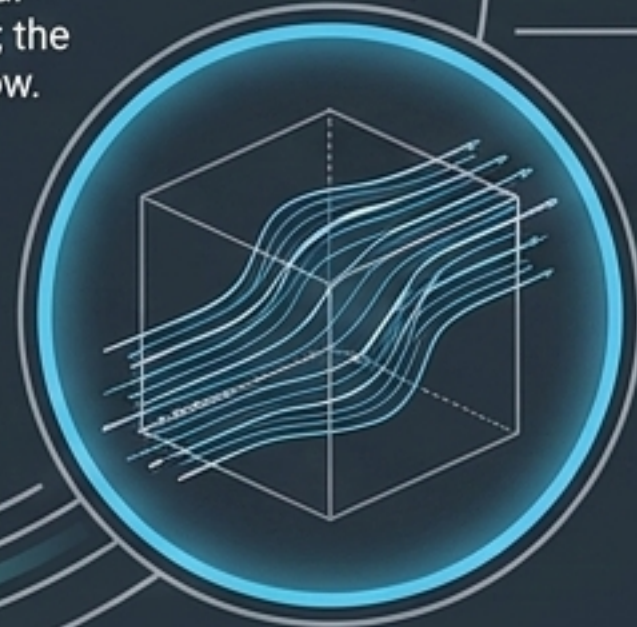
Configurational Entropy (S)

The measure of constraint relaxation. Entropy gradients drive the flow and twist the spacetime.



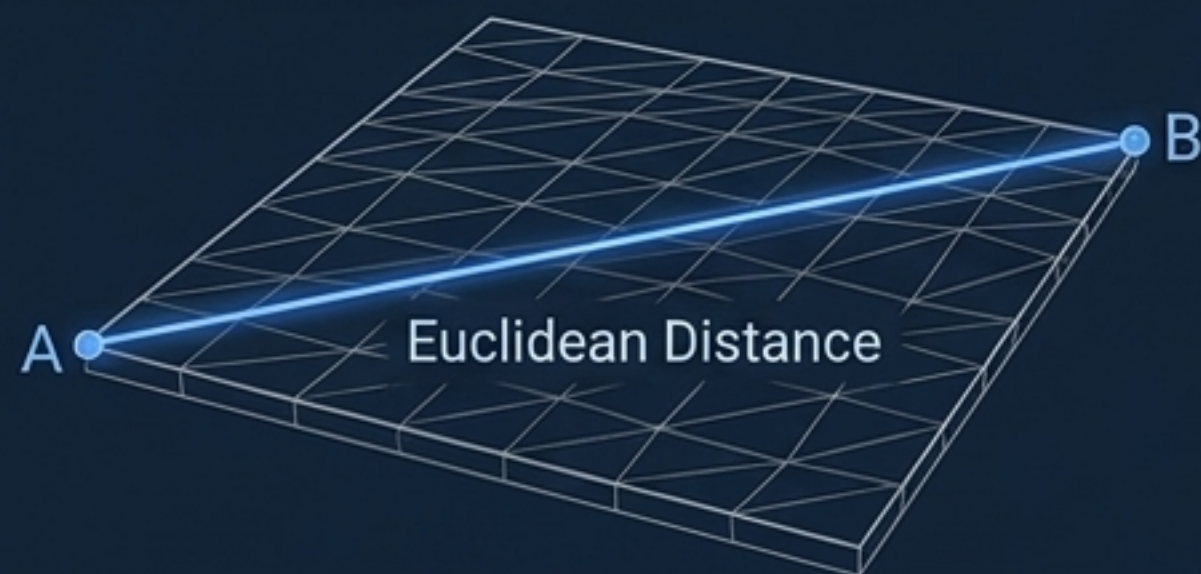
Lamprodyne Flow Velocity (V)

The negentropic bulk flow. The kinematic engine of organized motion fighting against chaos.



The Accessibility Landscape: Distance depends on the terrain

The Concept



The "Crowded Ballroom" Effect.

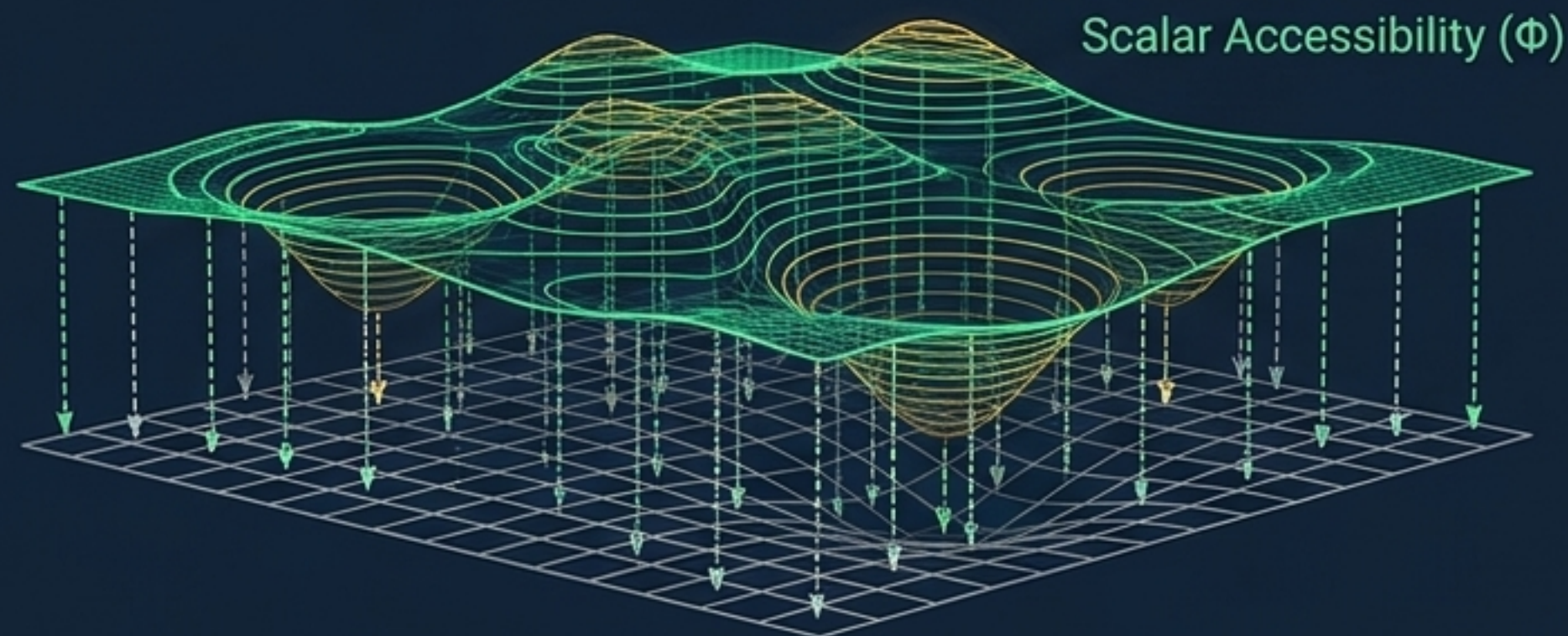
The physical room isn't larger, but navigating dense clusters of variation makes the functional distance longer.

The Accessibility Metric actively penalizes rapid changes in the environment.

The Math

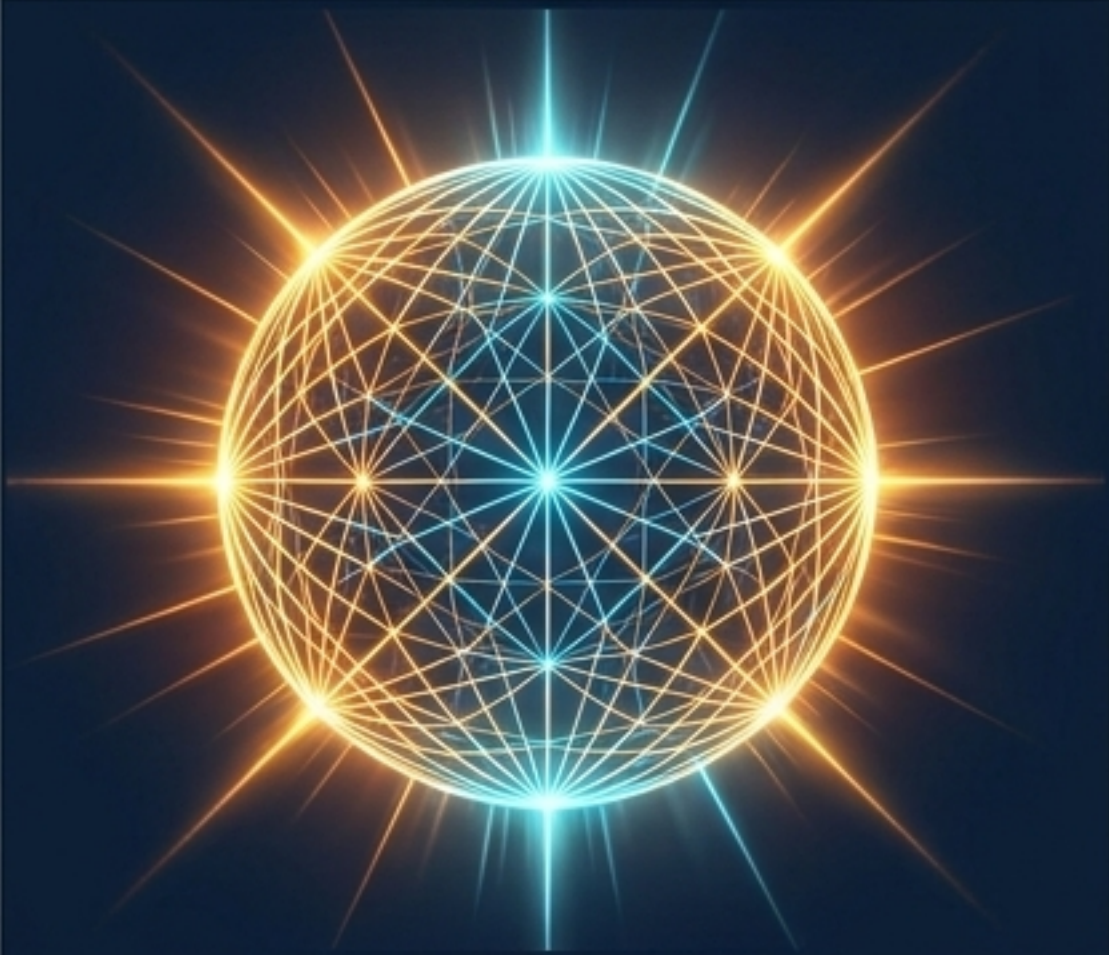
$$g_{ij}^{acc} = g_{ij} + \kappa \partial_i \Phi \partial_j \Phi$$

High gradients compress admissible trajectories.



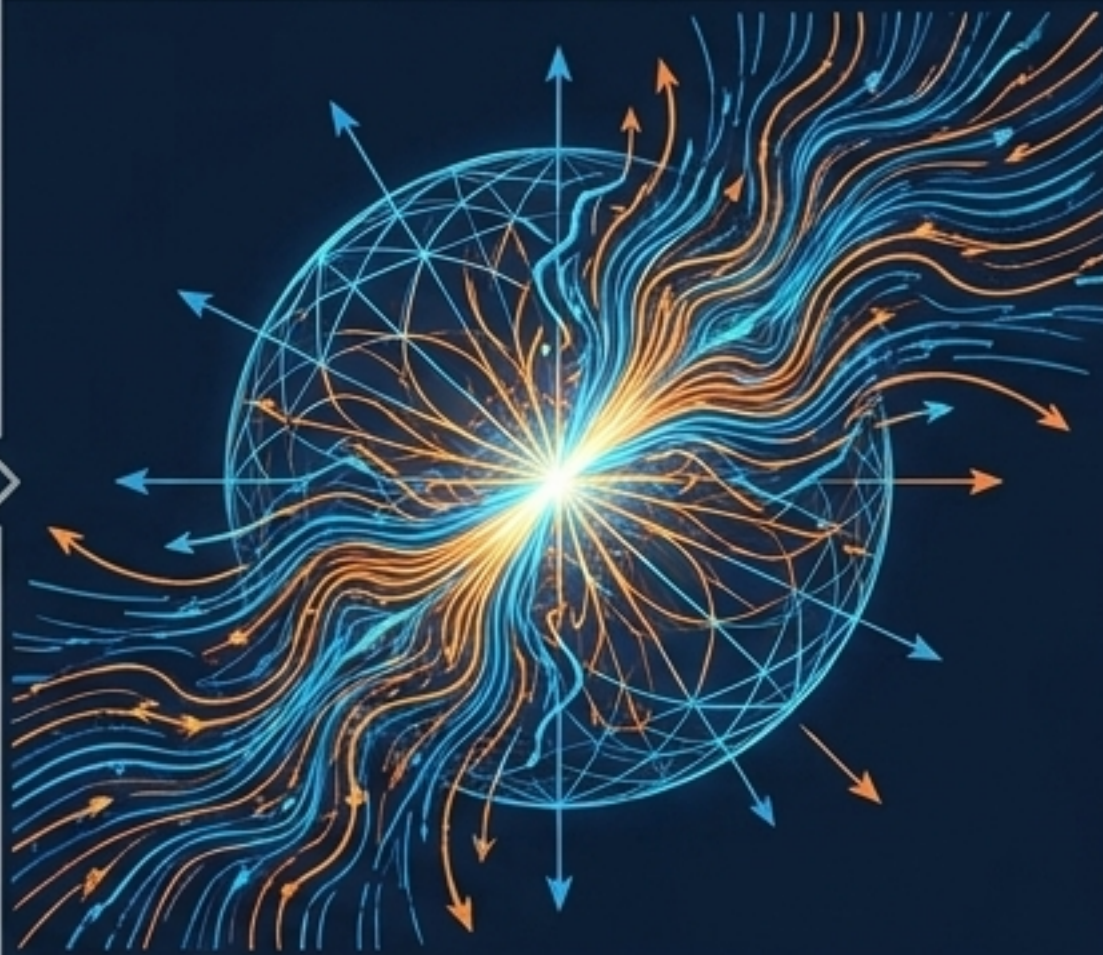
The Engine of Relaxation: Escaping the Ostrogradsky Ghost

Phase 1: High Constraint



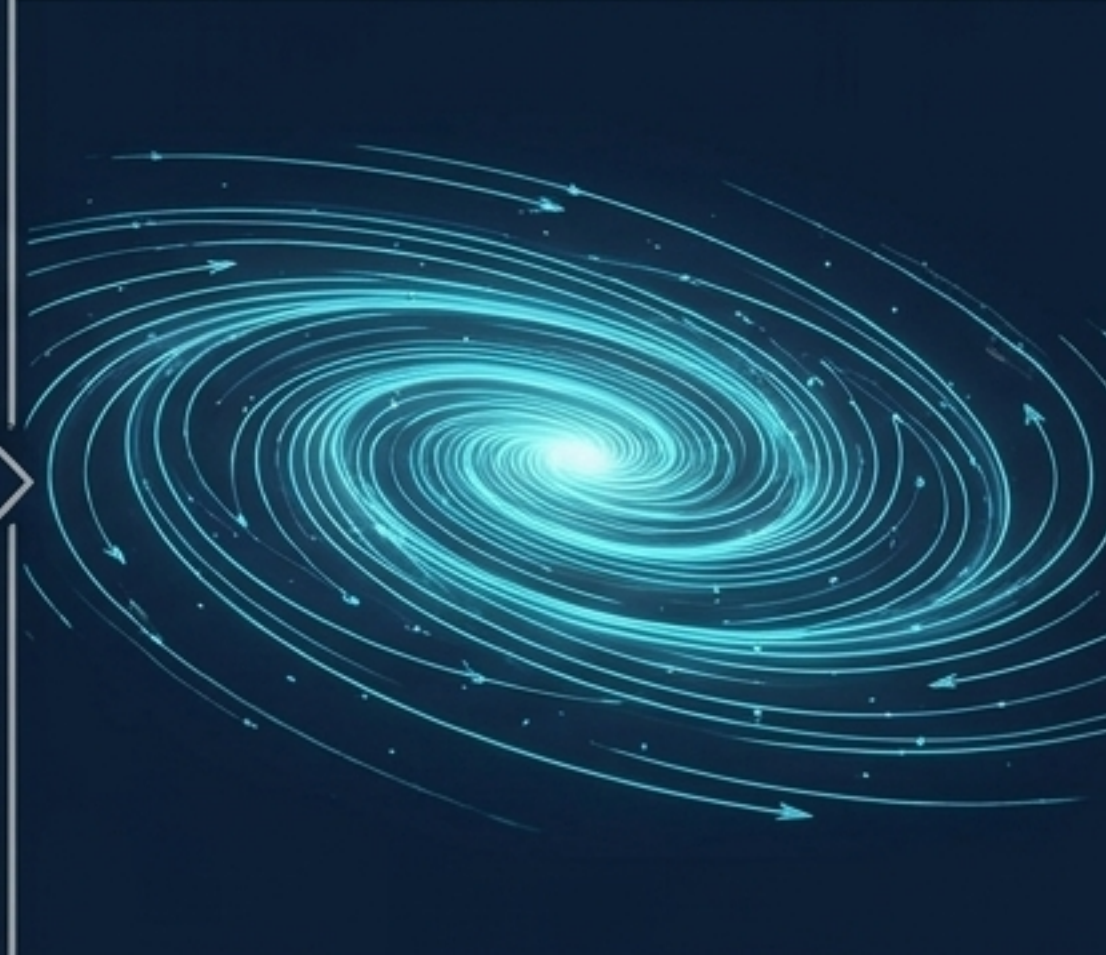
The Snapped Rubber Band: The universe is not a singularity; it is a stretched rubber band loaded with potential energy. (The Metastable Saddle / Big Bang)

Phase 2: The Fall



Violent Uncoiling: Generic underdense perturbations cause the system to snap back. To microscopic observers, this violent release of tension looks like anomalous acceleration.

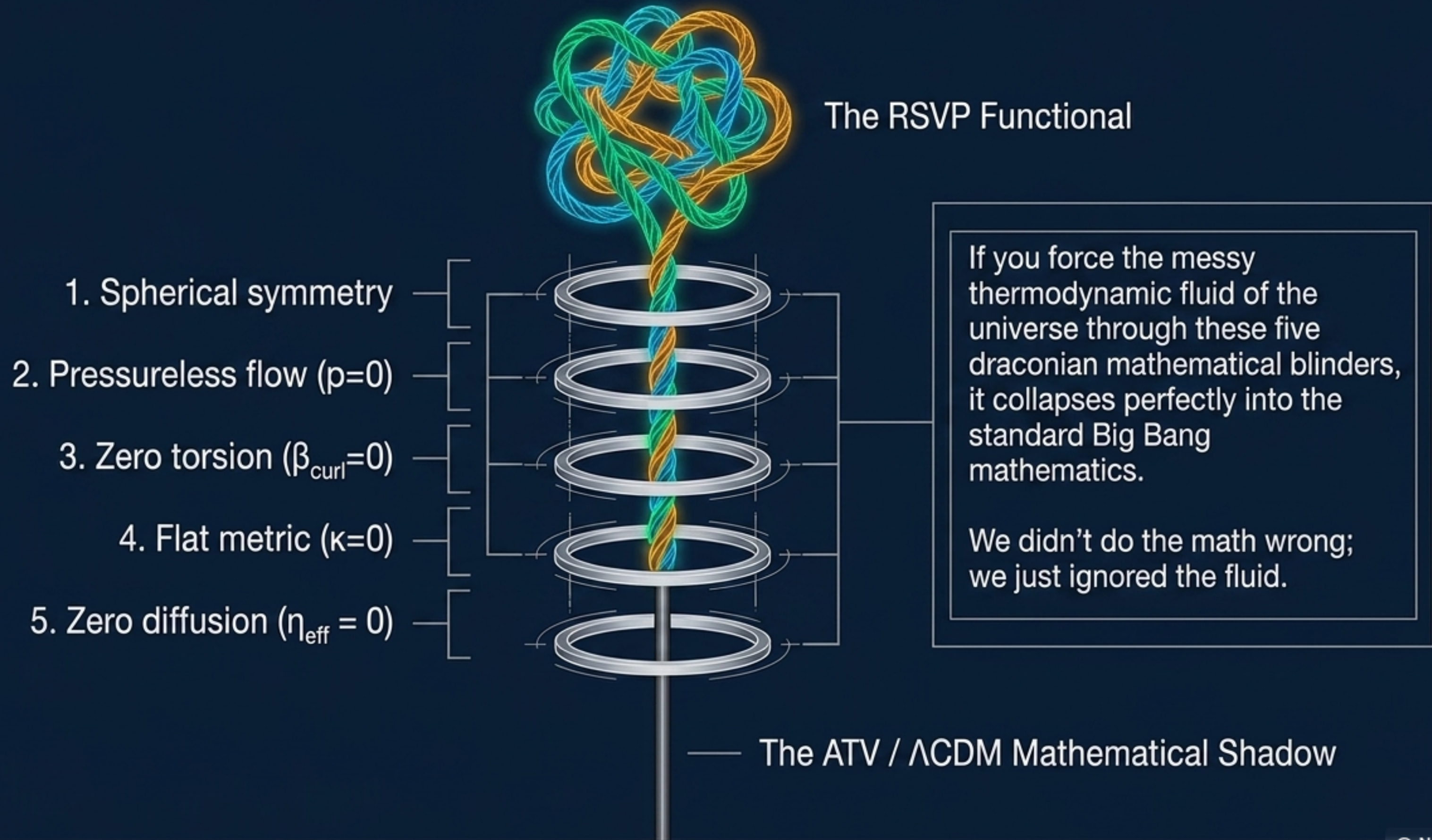
Phase 3: Maximal Accessibility



The Glide: The universe coasts toward thermodynamic equilibrium.

The math avoids the "Ostrogradsky Instability." By keeping kinetic terms to the first order, RSVP guarantees a ghost-free, mathematically stable universe that doesn't spontaneously self-destruct.

The Reduction Principle: Putting Blinders on the Universe



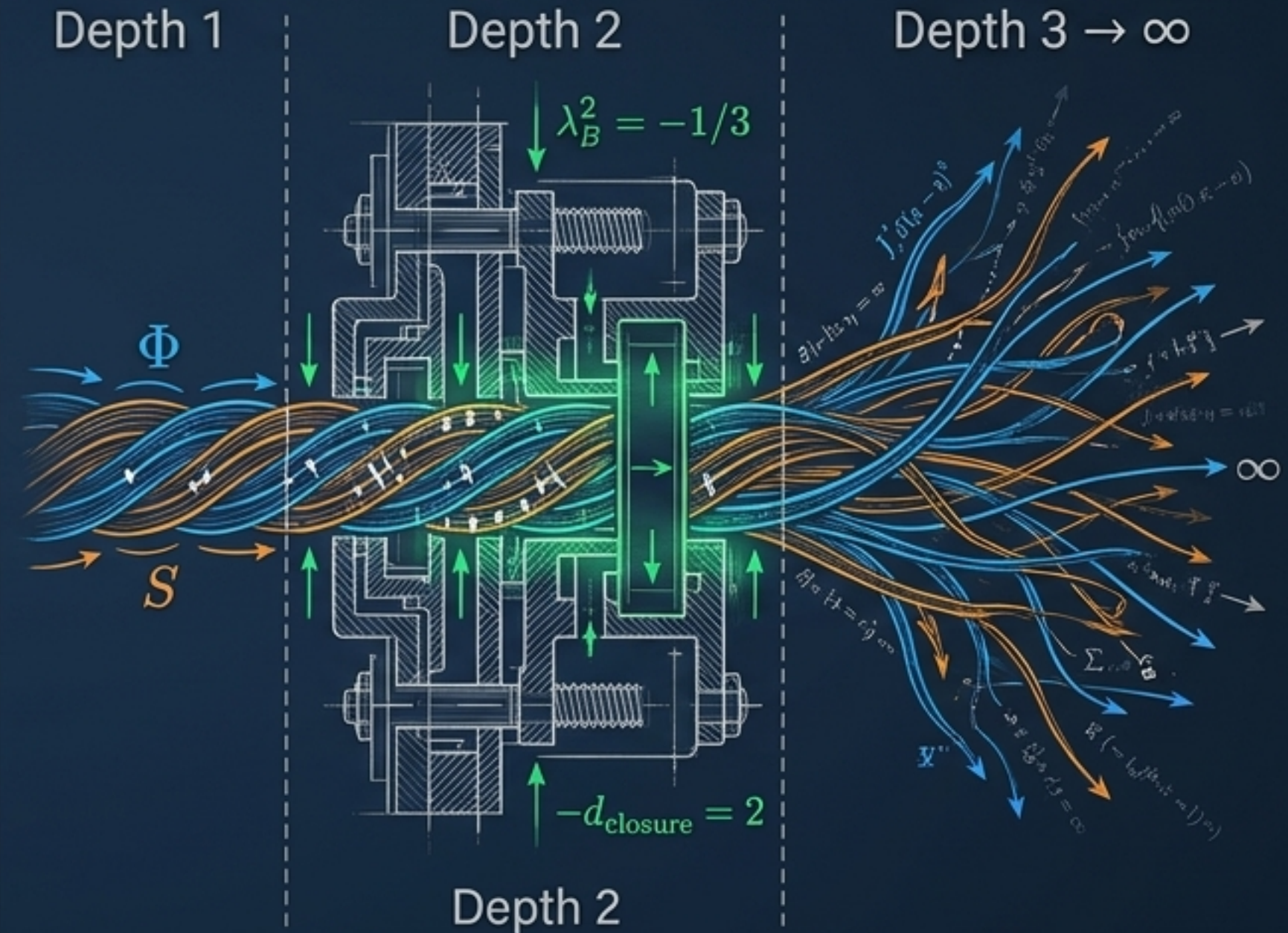
The Depth-Two Secret ($d_{\text{closure}} = 2$)

The Math

Order (n)	Eigenvalue λ_B^n	Stability
Level 1 ($n = 1$)	$\lambda_B^1 = -1$	Unstable/Gauge
Level 2 ($n = 2$)	$\lambda_B^2 = -1/3$	Stable Lock
Level 3 ($n \geq 3$)	All $\lambda_B^n > 0$	Purely Unstable

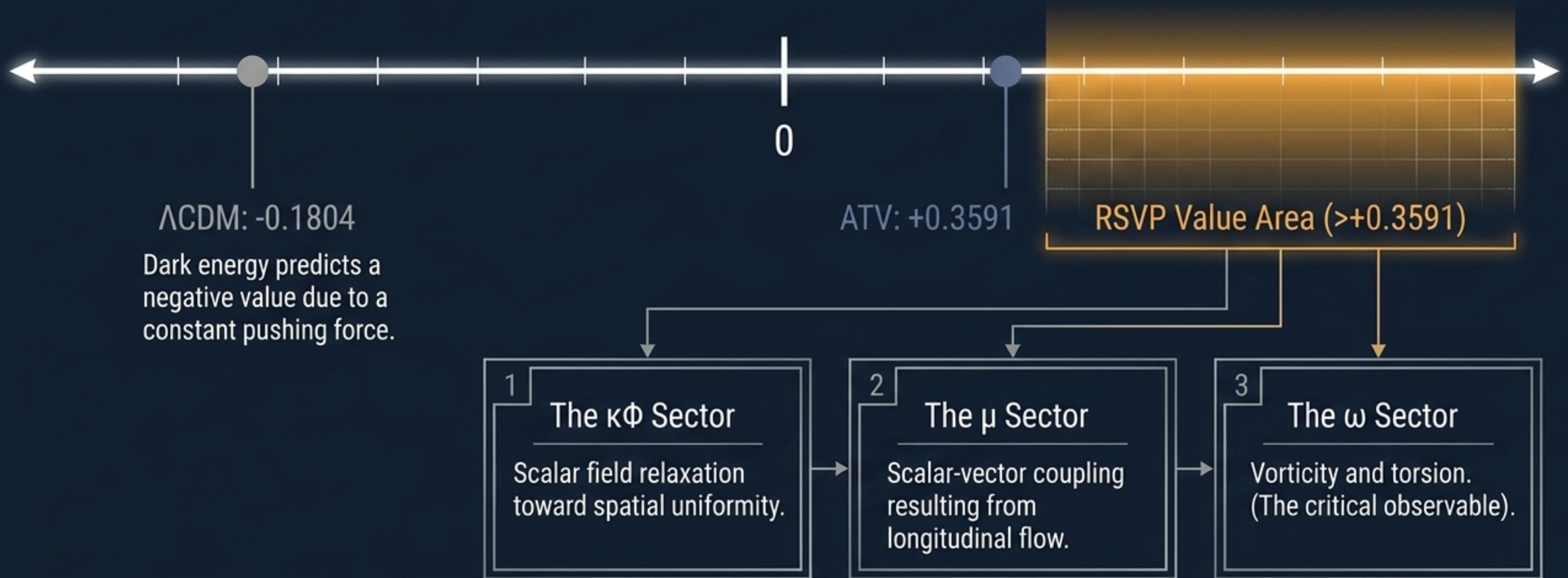


The Architectural Metaphor



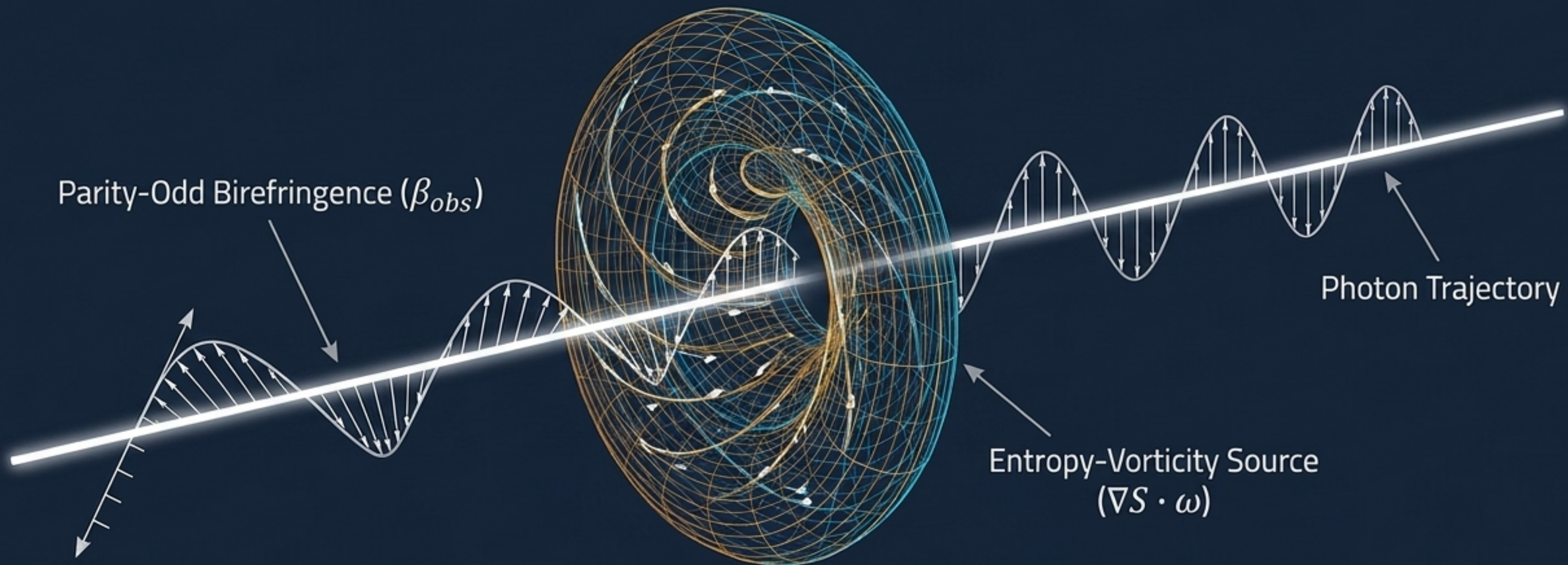
The infinite-order instability of the universe is finite-level determined. You only need to look two levels deep into the mathematical perturbations to guarantee the absolute fate of the entire system.

Testing the Plenum: The Redshift Divergence



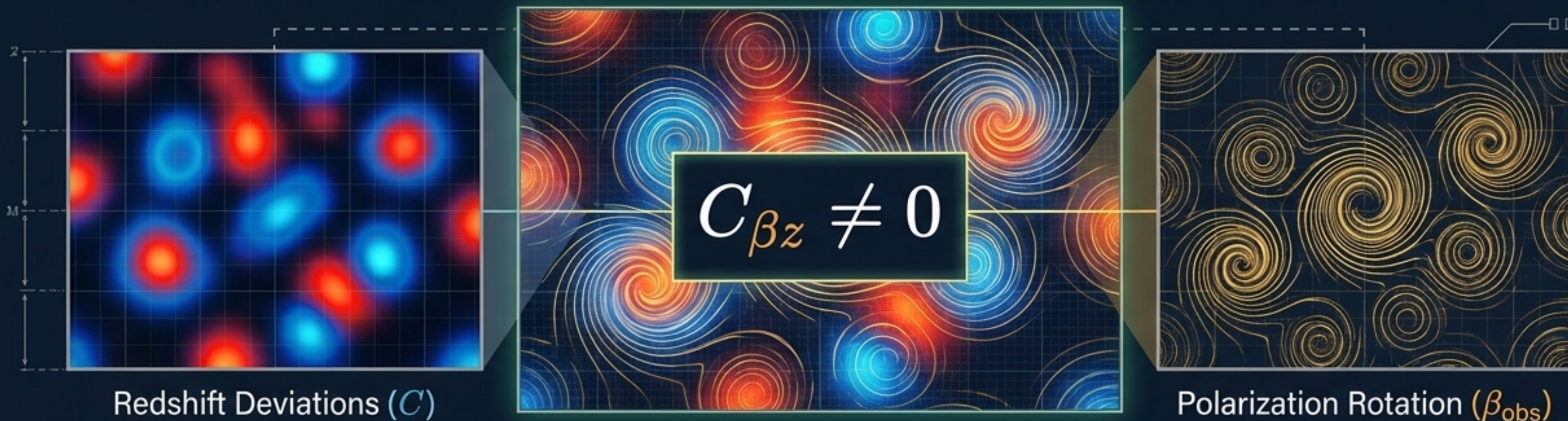
Instability models predict a systemic positive value because relaxation dynamics have a completely different time-reversal symmetry than a constant vacuum push.

The Parity-Odd Connection: Let the Fluid Swirl



What happens if we remove the "Zero Torsion" mathematical blinder? The macroscopic lamphrodine flow begins to swirl. This creates a "Parity-Odd" environment. Just as swirling water twists a flat ribbon, the entropy-vorticity field physically twists the polarization of ancient cosmic light passing through it, generating Cosmic Birefringence (β_{obs}).

The Smoking Gun: Redshift-Birefringence Cross-Correlation



In Λ CDM, birefringence is caused by quantum axions, entirely decoupled from galaxy redshifts (Cross-correlation = 0).

In RSVP, the exact same macroscopic fluid source ($\bar{\nabla}S \cdot \omega$) alters the redshift and twists the light.

Overlaying maps from CMB-S4 and DESI will definitively prove whether the universe is governed by quantum ghosts or macroscopic fluid dynamics.

The Observational Discriminants Matrix

	Λ CDM	ATV	RSVP
Conceptual Cause of Expansion	Dark Energy	Math Instability	Living Plenum
3rd-order redshift (C)	-0.1804	+0.3591	> +0.3591
Birefringence (β_{obs})	0	0	$\neq 0$
Redshift-Birefringence ($C_{\beta z}$)	0	0	$\neq 0$ (The Smoking Gun)
Closure Depth (d_{closure})	—	2	2

Key Detail: The definitive signature of RSVP isolates the entropy-vorticity coupling at the frontier of current observational precision. A cross-correlation between anisotropic birefringence maps and redshift maps will isolate the entropy-vorticity coupling.

The Grand Phase Portrait: A Cosmos Relaxing Within Itself

The Big Bang:

Not an explosive singularity, but a highly constrained metastable saddle point.

The Friedmann Saddle

The Fall of Space:

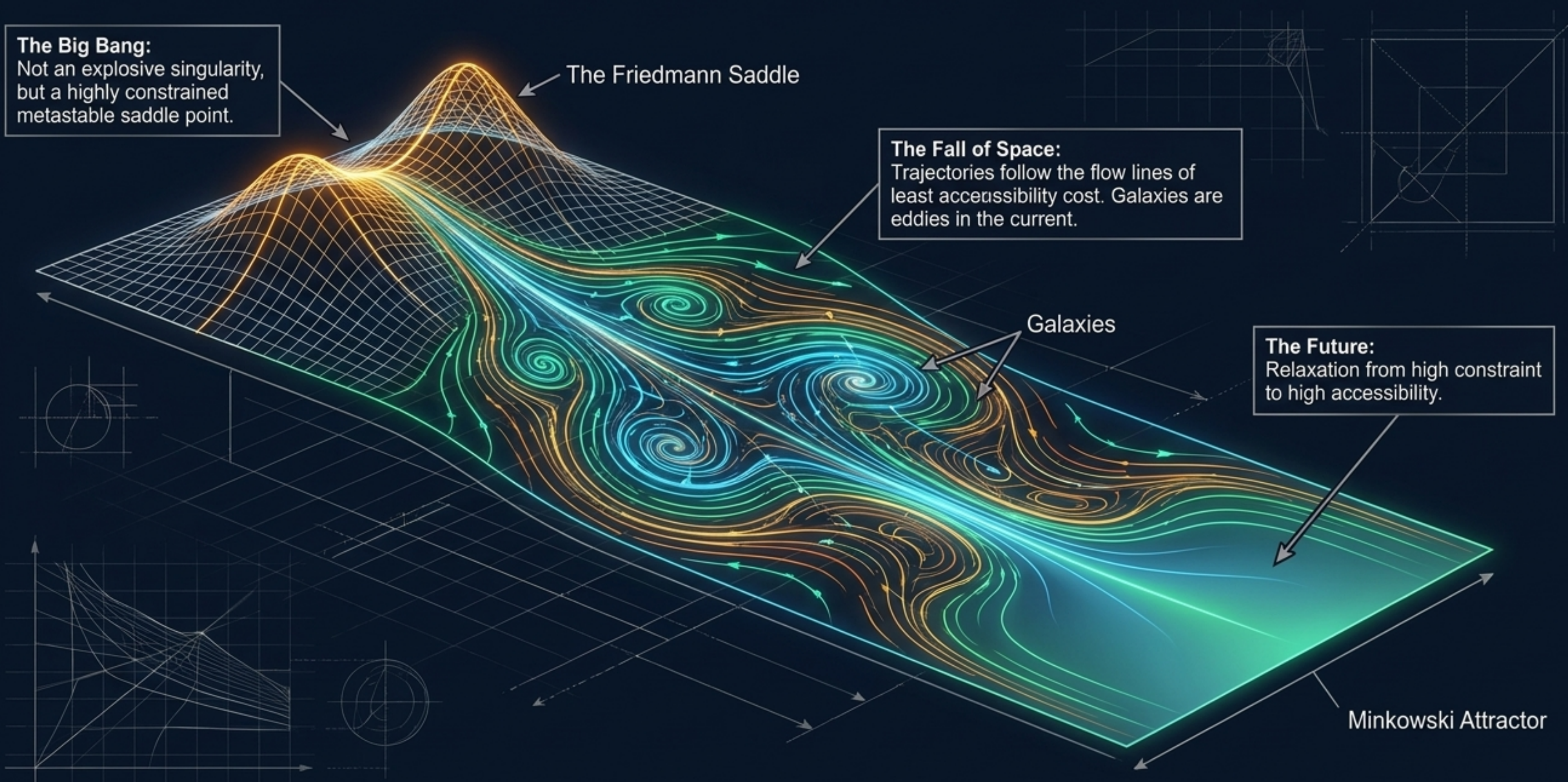
Trajectories follow the flow lines of least accessibility cost. Galaxies are eddies in the current.

Galaxies

The Future:

Relaxation from high constraint to high accessibility.

Minkowski Attractor



Finding Rest



The universe is not a terrifying explosion being ripped apart by an invisible dark energy. It is a beautifully complex, continuous medium naturally and inevitably seeking its own thermodynamic equilibrium.

The cosmos is not expanding into emptiness. It is relaxing within itself.